

## **Historic, Archive Document**

Do not assume content reflects current scientific knowledge, policies, or practices.





**1947 AUTUMN SUPPLEMENT**

to

*"Garden Gems"*

by

**Bobbink & Atkins**

East Rutherford, New Jersey

# Foreword

WE TAKE pleasure in presenting our autumn 1947 supplement to "Garden Gems." Many experienced gardeners feel that some varieties produce better results when planted at this season of the year.

Herein are listed certain varieties from our great collection of ornamental plants which should, in most sections, be planted in the fall.

Due to the limited size of this supplement, many types of plants are not listed, but we shall be pleased to quote on such varieties on request.

In 1948 we shall celebrate the Golden Anniversary of the founding of BOBBINK & ATKINS and we hope that our experience with plant life has helped you with your gardening problems. Each year we have tried to keep up production of old, new, and rare plants; however, at times during the past few years, the demand has exceeded the supply, but it is hoped that this situation will in the very near future be remedied.

With almost 50 years of experience and constant effort to produce better plants and more beautiful varieties, we look forward to bringing to our many old friends and new customers more "Garden Gems."



Mr. Bobbink in his garden on July 12, 1947. Note the late-blooming *Azalea macrantha* hybrid after all other hardy Azaleas have flowered in May and June.



To the thousands of Rose-lovers who visit the New York Botanical Gardens in the Bronx, New York City, this small view of the Rose Garden will revive memories of pleasant hours in a real atmosphere of Roses. Through the unflinching devotion of Mr. Bobbink to the Rose in America, we have donated practically all the Rose plants to this world-famous institution where they are perfectly maintained by a capable staff. Started about 1920, many of the beds of older, dependable kinds are still in fine condition and, of course, new and improved varieties are added yearly. The very best results were obtained when planting them late in October and November. Visitors are cordially welcome.

*Bobbinck*



Illustration of the front cover of our 1947 Complete Catalogue of 56 pages, "Garden Gems." Most of our patrons receiving this Autumn Supplement already have their copy of the current issue wherein many more items are fully described and illustrated. Practically all of them may be successfully transplanted this fall.

Bobbinck & Atkins

# Perennials . . .

## to Plant This Fall



## Delphiniums

### GIANT-FLOWERING HYBRIDS

#### NAMED VARIETIES

A new strain of Delphinium which has been recently developed and is now recognized as superior to all former named varieties.

**Black Knight.** Very deep violet, with a velvety texture. Darkest of all.

**Blue Jay.** Bright medium blue with a dark bee.

**Cameliard.** Pure lavender with a white bee.

**Galahad.** Large clear white with a heavy glistening texture.

**Guinevere.** Light pinkish lavender with a white bee.

**King Arthur.** Brilliant rich royal purple with a large white bee.

### Special Offer

#### Prices of above Pot-grown Hybrids:

6 plants, one of each named variety, \$3.00

12 plants, two of each named variety, \$5.50

Individual plants, 60 cts. each.

#### Field-grown plants

60 cts. each; 6 plants, one of each variety, \$3.00

12 plants, two of each variety, \$5.50.

### Belladonna

A fine light blue Delphinium. Still unsurpassed for cutting, as the florets do not drop quite as quickly as those of the hybrids. 3 for \$1.35; 10 for \$4.00.

### Lamartine

A strong grower with good foliage. Its handsome spikes of fine, dark blue flowers provide cut-flowers from June to September. 3 for \$1.35; 10 for \$4.00.

### Delphinium chinensis

Chinese Delphiniums are somewhat different from the hybrids. Their foliage is feathery and they rarely exceed 3 feet in height. They flower in panicles, giving the plant a graceful appearance. Free blooming and hardy. Gentian-blue flowers. 2 ft. June to Oct. 3 for \$1.35; 10 for \$4.00.

### Chinensis alba

A pure white form of the above. 3 for \$1.35; 10 for \$4.00.



ANTHERICUM *Liliastrum major*. 3 for \$1.50

## ANTHERICUM

**Liliastrum major. St. Bruno's Lily.** (Named for the founder of the Carthusian monks.) The white flowers, like Madonna lilies, are carried on an erect spike surrounded by narrow, grass-like foliage. Excellent for border or rockery, also good for cutting. 1½ ft. May, June. 60 cts. each; 3 for \$1.50.

The following Perennial items offered in our Complete Catalogue are temporarily sold out for this fall:

**Tritoma, Canary**, page 20.

**Centaurea dealbata Steenbergii**, page 20.

**Dianthus, Pink Princess**, page 21.



CONVALLARIA *majalis* (Lily-of-the-Valley). Large clumps, 10 for \$4.00

## ACONITUM · Monkshood

**Fischeri.** Provides dark blue flowers in the garden after the delphiniums have passed, and contrasts well with the early chrysanthemums. Thrives in sun, also in partial shade. Best after becoming well established. 2 to 3 ft. Sept., Oct. 3 for \$1.50; 10 for \$4.50.

**Napellus, Sparks' Variety.** A tall plant with branching spikes of blue flowers. 5 to 6 ft. July, Aug. 3 for \$1.50; 10 for \$4.50.

## ASCLEPIAS

**Tuberosa. Butterfly-plant.** One of our showiest native plants. Bears large heads of brilliant orange-scarlet flowers. 2 to 3 ft. July, Aug. 3 for \$1.35; 10 for \$4.00.

**A Worth-While Plant**

## CIMICIFUGA · Snakeroot

**Racemosa.** From September until severe frost this is one of the most effective border plants, producing its feathery white flowers on graceful stems 4 to 5 feet high. An excellent cut-flower succeeding best in partial shade. 75 cts. each; 3 for \$2.00.

**Racemosa simplex.** This attractive perennial will enhance the effectiveness of any hardy border. The dense spikes of feathery white flowers are borne on tall, graceful stems 2 to 3 feet high, excellent for cutting; an ideal subject for vases. Will grow best in a half-shady location. 75 cts. each; 3 for \$2.00.

**Racemosa simplex, White Pearl.** A great improvement on the older Cimicifuga. The buds appear as little white pearls opening into fluffy white balls. The long terminal racemes reach a height of about 3 feet. It is one of the very few herbaceous plants to continue to bloom a month or so after the first hard frosts. Must be planted in a shady moist location where it will attain its full beauty and remain permanent. \$1.00 each; 3 for \$2.50.



Make this trademark your guide to the best in Garden Gems.

## CONVALLARIA Lily-of-the-Valley

**Majalis.** Our clumps are the large-flowering type and are perhaps the best ground-cover for situations in dense shade. They are best planted in late fall. 10 for \$4.00; 25 for \$9.50.

**Majalis Fortunei.** This is a form introduced many years ago but it has just been reinstated. The foliage is larger than *Majalis* and so are the flowers, which are borne on long stems. 3 for \$1.50; 10 for \$4.50.

**Bobbink & Atkins**

# LILACS

They thrive best when planted in fall. See page 21.

# VINCA

{Periwinkle or Myrtle}

Don't overlook the many uses for this fine evergreen ground-cover for shady or bare locations. See page 22.

# ROSES

Planted after frosts in October and through November, they will produce good blooms next summer. (Climbers and Shrub Roses excepted.)

# VINES

## Polygonum Auberti

{Chinese Fleece-vine}

A quick-growing, strong, vigorous vine covered with foamy sprays of white flowers in late summer and fall. Very hardy and easy to grow. See page 23.



## Come to the Nursery

to inspect the freshly dug evergreens and other "Balled and Burlapped" or potted plants for improving your home grounds this fall. See Back Cover.



*Planting  
Instructions  
Sent with  
the Order*



**DICENTRA**  
**Bleeding-Heart**

**Cucullaria. Dutchmans-breeches.** Oddly shaped yellow-white flowers in early spring. Grows well in a "woody" soil and surroundings. 3 for \$1.50; 10 for \$4.50.

**Eximia. Fern Bleeding-heart.** Fine, fern-like foliage and slender racemes of small pink flowers almost all season. 1 ft. May to Aug. 3 for \$1.75; 10 for \$5.50.

**Spectabilis.** This fine old favorite, flowering in May and June, is indispensable. Growth commences early in the spring and dies back in summer. 3 for \$2.00; 10 for \$6.00.

*New*

**WHITE  
 FRINGED**

**BLEEDING-HEART**

(*Dicentra eximia alba*)

A very rare white form of this old garden favorite. Blooms over a long season in May and June and again later. Very hardy and grows well in sun or shade. \$1.00 each; 3 for \$2.75.



**CIMICIFUGA racemosa simplex,**  
 White Pearl. 3 for \$2.50



**DICTAMNUS fraxinella rubra.** 3 for \$1.35



**DORONICUM caucasicum.** 3 for \$1.35

**DICTAMNUS • Gas-Plant**

**Fraxinella (albus).** The white flowers sometimes emit a vapor which is inflammable and instantly aromatic. 2 to 3 ft. June to Aug. 3 for \$1.35; 10 for \$4.00.

**Fraxinella rubra.** Rosy purple with deeper-colored veins. 2 to 3 ft. June to Aug. 3 for \$1.35; 10 for \$4.00.

**DORONICUM • Leopards-Bane**

**Caucasicum.** Yellow marguerite flowers, 2½ to 3 inches across, on 18-inch stems. 3 for \$1.35; 10 for \$4.00.

**Caucasicum, Mme. Mason.** Large yellow daisy-like flowers excellent for cutting. Compact growth. Longer lived and generally more satisfactory than *Caucasicum*. 2½ ft. May, June. 3 for \$1.50; 10 for \$4.50.

**Clusi.** Large, sulphur-yellow flowers on 12 to 15-inch stems, rising from attractive soft green foliage. April, May. 3 for \$1.35; 10 for \$4.00.



**THE CHRISTMAS ROSE**  
(*Helleborus niger*). \$1.50 each

## EPIMEDIUM • Barrenwort

**Macranthum niveum.** In May and June it is a perfect sheet of white flowers offset by handsome foliage. Worthy of a place in every garden. 3 for \$1.00; 10 for \$3.00; 100 for \$25.00.

**Macranthum violaceum.** Lilac flowers. 3 for \$1.35; 10 for \$4.00.

**Pinnatum elegans.** Bright yellow flowers. Foliage rich bronze in fall. 9 in. June to Aug. 3 for \$1.35; 10 for \$4.00.

**Pinnatum sulphureum.** Large; sulphur-yellow. Foliage rich bronze in fall. Apr. to July. 3 for \$1.35; 10 for \$4.00.



**HEMEROCALLIS (Daylilies)**

## HELLEBORUS

**Cyclophyllus.** A dwarf evergreen hardy perennial blooming in late winter. Flowers yellowish green. Needs a moist, shady location in rich soil. \$1.50 each; 3 for \$4.00.

**Niger. Christmas Rose.** In mild winters bloom appears in late December. The anemone-like flowers, 2½ to 3 inches across, last for weeks. \$1.50 each; 3 for \$4.00.

## HEMEROCALLIS

### Daylily

#### Early-flowering Varieties

**Aureole.** Golden yellow flowers. A very early-blooming variety. 3 ft. May, June.

**Citrina.** Large, very fragrant, sulphur-yellow flowers. 3 ft. June, July.

**Dumortieri.** Orange-yellow flowers. Good foliage. 2 ft. May, June.

**Flava major.** Large, fragrant, lemon-yellow flowers. 3 ft. May.

**Florham.** Golden yellow, trumpet-shaped flowers marked darker yellow. June, July.

**Sovereign.** A very early-blooming variety with flowers of deep orange. 2 to 3 ft. June, July.

**Thunbergi. Lemon Lily.** Much like Flava, but blooms a month later, in July. Spikes 2 to 3 feet tall, bearing pale yellow blossoms.

#### Late-flowering Varieties

**Flava.** Sweet-scented, clear full yellow. 2½ ft. Blooms profusely in June.

**Hybrida, Gold Dust.** Orange flowers. 3 ft. June.

**Margaret Perry.** Brilliant orange-scarlet with a distinct yellow line running through each petal; bold yellow base. 4 ft. Blooms nearly two months.

**All Early and Late-flowering Varieties, 3 of one variety for \$1.35; 10 of one variety for \$4.00.**

### Special Daylily Offer

**12** plants, 2 each of 3 early and 3 late varieties, our selection, each plant labeled (Regular value \$6) for **\$4.50**

*See...* your copy of our 1947 Master Catalog (GARDEN GEMS) . . . . for more complete selection of Plants.

*Finest*  
**TALL  
 BEARDED  
 IRIS**

WABASH



**NEWER VARIETIES**

- E. B. Williamson.** 36 in. Lustrous coppery red.
- Ethel Peckham.** 34 in. Sensational red tone.
- Goldsmith.** 42 in. Early. Pure deep yellow, flushed bronze. \$1.50 each.
- Gudrun.** 42 in. Early. Dykes Medal. Massive flowers. Largest white.
- Indigo Bunting.** 36 in. Unusually handsome deep blue. \$1.50 each.
- Lord Lambourne.** 40 in. Very early. Rich madder-crimson bicolor.
- Miss California.** 48 in. One of the three finest new pink tones. \$1.50 each.
- Royal Splendour.** 34 in. New 1944. A superb velvety red.
- Shah Jehan.** 38 in. English Medal Winner. Enchanting new peach and lavender.
- Siegfried.** 44 in. Huge flowers of soft yellow, with bronze feathered border.
- Valiant.** 36 in. A real beauty. Standards soft iridescent old-gold flushed soft lilac; falls wisteria-violet blend.
- Wabash.** 39 in. Dykes Medal Winner. Standards glistening snow-white; falls vivid hyacinth-violet, with an 1/8-inch snow-white margin. \$2.00 each.

**All Newer Varieties, 75 cts. each; 3 of one variety for \$2.00, except where noted.**

*Without Iris, your garden is not complete*

East Rutherford, N. J.

**FAVORITE VARIETIES**

- Allure.** Light lavender-lilac; very free flowering.
- Alta California.** Clear deep yellow; falls bronzed
- Anna Marie Cayeux.** Light metallic blue.
- Black Douglas.** Very deep pansy-violet flowers.
- Buechley Giant.** Bright blue; very large and tall
- Cinnabar.** Deep red standards; bronze-red falls.
- Depute Nomblot.** Standards coppery red flushed golden bronze; falls claret-crimson.
- Desert Gold.** Pure yellow; early.
- Elizabeth Egelberg.** Soft lavender-rose standards; darker falls. Very attractive, large, tall, early.
- Helios.** Soft yellow with red lines on base of petals.
- Pluie d'Or.** Dark clear yellow; large and tall.
- White Marble.** Pure white marble; very large petals; very tall.

**Above Iris, 50 cts. each; 3 of one variety for \$1.35; 10 for \$4.00**

**SPECIAL**

**Bearded Iris Offer**

**10** plants, our selection, all different, from above varieties, each labeled. **\$3.75**



ORIENTAL IRIS

## • ORIENTAL IRIS •

(*Iris Kämpferi*)

"The Hardy Garden Orchid"

- Blue Bird.** Rich true blue. 3 petals.
- Bride.** Red-violet, heavily veined white. 3 large petals.
- Dinah.** Reddish purple, flaked white. 6 petals.
- Gold Bound.** Large, pure white, most conspicuous gold streak. 6 petals.
- La Favorite.** French gray, nearly white, veined blue, most pronounced yellow throat. 6 petals.
- Noranea.** Single. Bluish white with bluish purple veins.
- Ondine.** Pure white, shaded blue in center; very large, beautiful flower. 3 petals.
- Prince Camille de Rohan.** Rich reddish purple with indigo-blue. 6 petals.
- Princess Clothilde.** Porcelain-blue on an ash-gray background. 6 petals.
- Rosanne.** Light purple with heavy purple veins; stigmas dark plum color. Excellent. 6 petals.
- Shadow.** Red-purple, showing a velvety sheen. 3 petals.
- Tortoise.** Indigo-blue veined white; white stigmas. 3 large petals.
- Vesta.** Ash-gray, veined purple, purple center. 3 petals.
- William Tell.** Porcelain, veined blue, blue center. 6 petals.

All Oriental Iris, 50 cts. each; 3 of one variety for \$1.35; 10 for \$4.00

### Introductory Oriental Iris Offer

10 plants, one each of those marked (•) . \$4.00

## Siberian Iris

**Caesar's Brother.** Rich dark pansy-purple. Very fine. 3 for \$1.35; 10 for \$4.00.

**Perry's Blue.** Large clear blue flowers on 3-foot stems. A hybrid of *I. sibirica* but a better grower and extra fine for cutting. May, June. 3 for \$1.35; 10 for \$4.00; 50 for \$17.50.

**Sibirica.** Compact, tufted habit of growth, the stems bearing several clusters of the purplish blue flowers. 2 to 3 ft. May, June. 3 for \$1.20; 10 for \$3.75; 50 for \$15.00.

**Snow Queen.** Large snow-white flowers in profusion. May, June. 3 for \$1.35; 10 for \$4.00; 50 for \$17.50.



SIBIRIAN IRIS



VIRGINIA BLUEBELLS. 3 for \$1.00

## MERTENSIA • Bluebells

**Virginica. Virginia Bluebells.** Flowers blue, funnel-formed, in nodding clusters. Splendid in cool, moist, shady places. Should not be disturbed when once planted. 3 for \$1.00; 10 for \$3.00.

*A Most Satisfactory  
Plant*

## Perennial Phlox



All Phlox, except where noted, 3 of a kind for \$1.35; 10 of a kind for \$4.00

**Albert Leo Schlageter.** Brilliant scarlet-carmine with a darker center, in large pyramidal trusses.

**B. Comte.** Tall-growing variety producing large heads of rich satiny red turning to amaranth. Very brilliant. Looks well planted close to a yellow-flowered plant.

**Caroline Vandenberg.** Very showy lavender-blue flowers. A free bloomer of medium height.

**Charles Curtis.** A variety of a color outstanding and difficult to describe—a shade of sunset-red. Does not fade or discolor in the sun. We have the true variety.

**Count Zeppelin.** Large white trusses, each floret having a red center.

**Daily Sketch.** The finest pink Phlox. Remarkable for its enormous florets and huge trusses of lovely pink with a deeper eye.

**Enchantress.** Bright salmon-pink with dark red eye.

**Flash.** Gorgeous new variety. Carmine-crimson flowers with orange-scarlet center. Blooms freely; medium height.

**H. B. May.** Large trusses of a soft clear pink.

**Margaret Gavin Jones.** Large pink florets with carmine eye.

**Mary Louise.** A variety of great merit. Glistening waxy white flowers in extra-large heads. Largest blooms of all the white Phlox.

**Mia Ruys.** A dwarf midseason type, with enormous trusses of large, pure white flowers.

**Royal Purple.** The name describes the color.

**Snowball.** A dwarf variety having large trusses of snow-white bloom.

**Spitfire.** *New.* The name describes the color, which is a fiery reddish orange. A very robust grower; the flowers last for weeks and do not fade during hot weather. The graceful branching habit of the panicles is also a distinguishing characteristic. 75 cts. each; 10 for \$6.75.

**15** COLORFUL HARDY PHLOX **\$5.50**  
Regular value \$6.75 Our Selection, for only

3 each of 5 distinct colors, 5 varieties correctly labeled. Red, pink, white, salmon, and blue.

It is difficult to determine in advance just what varieties will be in greatest demand. While certain kinds become sold out, other excellent ones are always available. By granting us the privilege to assist with the selection, you enable us to offer the best at a substantial saving to you.

# THE PEONY

## The Flower Beautiful



**Peony ratings:** The rating with each variety is the average tabulated vote by members of the American Peony Society. 10 represents absolute perfection.

**Adolphe Rousseau.** 8.5. Lustrous rich dark red to garnet. Very early. \$2.00 each.

**Albert Crousse.** 8.6. Bright pink; excellent form; fragrant. Very late. \$1.50 each.

**Baroness Schroeder.** 9.0. Creamy white with unusual depth and size. Late. \$1.50 each.

**Cherry Hill.** 8.6. Deep crimson-red that does not fade. The earliest and most prolific bloomer in the red class. \$2.50 each.

**Edulis Superba.** 8.6. Brilliant rose-pink with silvery reflex. Most popular for cut-flowers. Fragrant. Very early. \$1.50 each.

**Felix Crousse.** 8.4. Brilliant, dazzling red, ruby-flame center. One of the oldest and most dependable reds. Midseason. \$1.50 each.

**Festiva Maxima.** 9.3. Very large, pure white Peony with center petalage tipped with carmine-red spots. Fragrant. Early. \$1.00 each.

**Karl Rosenfield.** 8.8. Crimson-red. Midseason. \$1.00 each.

**Kelway's Glorious.** 9.8. Creamy white flower of great delicacy and charm. One of the finest and most fragrant Peonies in existence. Late. \$3.00 each.

**Lady Alexandra Duff.** 9.1. Rosy pink shaded white. Midseason. \$1.50 each.

**Le Cygne.** 9.9. This rating would class it as the perfect white Peony and so it is when the plants become established two or three years. It is really a creamy white with perfect form and character. Very fragrant. Midseason. \$3.00 each.

**Mme. Jules Dessert.** 9.4. Very high-class light pink; fragrant. Midseason. \$1.50 each.

**Mons. Jules Elie.** 9.2. The finest silvery pink. Very early. \$2.00 each.

**Mons. Martin Cahuzac.** 8.8. This is the deepest red of all and often termed the "Black Peony." Early. \$2.50 each.

**Mrs. Edward Harding.** 9.3. White, illumined by golden stamens. Exquisite. \$2.00 each.

**Officinalis alba plena.** 8.6. Referred to as the "Old-fashioned Peony." Milky white. The first double Peony to bloom. Very early. \$2.00 each.

**Officinalis rubra plena.** 8.6. Referred to as the "Old-fashioned Peony." Brilliant red. The first double Peony to bloom. Very early. \$2.00 each.

**Philippe Rivoire.** 9.2. Considered the very best red Peony in existence. Very sweet fragrance. Late. \$3.00 each.

**Primevere.** 8.6. Sometimes referred to as the yellow Peony although the guard-petals are white; very fragrant. Midseason. \$2.50 each.

**Reine Hortense.** 8.7. An even shade of clear pink delicately flecked crimson. Midseason. \$1.50 each.

**Richard Carvel.** 8.8. One of the very best bright red Peonies. Very fragrant. Early. \$2.00 each.

**Sarah Bernhardt.** 9.0. An even shade of lovely pure pink. Very late. \$1.50 each.

**Solange.** 9.7. "Coffee-and-cream" color. One of the finest exhibition colors although it is not always a dependable bloomer. Very late. \$2.00 each.

**Therese.** 9.8. A wonderful blend of translucent pink, lavender and old-rose. Should be in every collection. Fragrant. Midseason. \$1.50 each.

**Walter Faxon.** 9.3. The only true salmon-pink Peony in existence. Very fragrant. Late. \$1.50 each.

## Special Offer of Peonies

# 12

Fragrant, Large-Sized Double Peonies.  
12 Super-Size Roots.

One of each of those marked (●) **\$16.50**  
(Regular value \$20.00) for . . .

# Oriental Poppies



For dazzling, barbaric splendor, the great Oriental Poppies are absolutely unrivaled. Standing out in bold relief they command attention and admiration. The prevailing color is a vivid orange-scarlet, with large black blotches at the base of the petals, and a great mass of bluish black stamens in the heart of the large, cup-shaped flowers.

We have combed the list of varieties to be sure of offering you the best. Also we have included some of the new ones that we selected after serious comparison and study. For your convenience we have listed them as to color predominance.

September and October are fine months to plant Poppies. We have sometimes had our best luck when planting in late October and early November. Given reasonably rich soil and a light winter covering, these strong field-grown plants will be sturdy and free flowering next spring.

**All Poppies are 50 cts. each;  
3 of one variety for \$1.35,  
except where noted**

**Barr's White.** Very large, heavily creped white flowers. 65 cts. each.

**Cedar Hill.** Pink blooms 5 inches wide. Very fine.

**Glowing Ember.** The name accurately describes this beautiful variety.

**Grand Mogul.** Bright red blooms with big black blotches.

**Helen Elizabeth.** Pink flowers without dark spots.

**Joyce.** Cerise-rose with black blotches.

**May Queen.** Light scarlet flowers on a dwarf plant.

**Mrs. Perry.** Orange-apricot.

**Wunderkind.** Large, brilliant carmine-pink blooms on 3-foot stems. 65 cts. each.

**Wurtembergia.** Brilliant dark scarlet of great size and substance.

## SPECIAL OFFER OF POPPIES

for Fall Delivery

**6** varieties, our selection to include **\$2.75**  
the color range, labeled for.....  
(Regular value \$3.00)

**12, 2 each of 6 varieties, \$5.00**



## PACHYSANDRA

**Terminalis. Japanese Spurge.** Most useful for planting in dense shade where few other plants will grow or for bordering walks and drives. The glossy foliage remains green winter and summer. Its inconspicuous greenish white flowers are produced in May and June. 6 to 9 in. Our pot-grown plants are incomparably superior to the field-grown ones usually offered. 10 for \$2.00; 25 for \$4.50; 100 for \$15.00.

# Everblooming HYBRID TEA ROSES for Fall Planting



**DUQUESA DE PENARANDA.** \$1.25 each

Spaced about 16 to 18 inches apart each way, twelve Roses may be planted in a bed approximately 4 by 6 feet. If a longer bed will fit in better with your garden scheme, then allow for space 2 feet, 10 inches by 9 feet long. While this selection represents a wide range of sparkling Rose color, they will all blend harmoniously in the same bed.

Fuller descriptions and illustrations will be found on pages 4 and 5 in our 1947 Complete Catalogue of 56 pages.

## SPECIAL OFFER F47-1 B. & A. FAVORITE DOZEN

12 Lovely Everblooming Varieties, one each of those marked ●  
(Regular Value \$15.50) **\$14.00** Net

or 2 each (24 plants)  
Offer F-47-2 . . . . for **\$27.00** Net



**POINSETTIA.**  
\$1.25 each

Many years ago it was our custom to enumerate a dozen good reasons why the very best results are achieved when this type of Rose plant is set out from the latter part of October to mid-December, depending on latitude. Now that the practice is so common and found to be sound from every angle, more and more Rose-planters will take advantage of the pleasant autumn planting weather and thereby enjoy additional Rose beauty beginning next June.

**CHARLES K. DOUGLAS.** Red. Flaming scarlet, flushed velvety crimson. \$1.25 each.

**CHRISTOPHER STONE.** Red. Brilliant scarlet-red. \$1.25 each.

**DUQUESA DE PENARANDA.** Bicolor. Cinnamon-peach color; very fragrant. \$1.25 each.

**EDITH NELLIE PERKINS.** Pink. Two-tone pink, coppery rose and salmon. \$1.25 each.

**EDITOR McFARLAND.** Clear rose-pink. \$1.25 each.

**ETOILE DE HOLLANDE.** One of the very best crimson-red Roses. \$1.25 each.

**GOLDEN DAWN.** Lemon-yellow. \$1.25 each.

**GOLDEN RAPTURE.** Yellow. Golden yellow ● with excellent form. \$1.25 each.

**IMPERIAL POTENTATE.** Sparkling rose-pink. \$1.25 each.

**MARCIA STANHOPE.** White. Semi-double, pure ● white. \$1.25 each.

**MARGARET McGREDY.** Red. Orange-scarlet, ● turning carmine-rose. \$1.25 each.

**McGREDY'S SCARLET.** Vivid rose-red flowers. \$1.25 each.

**MISS ROWENA THOM.** Rose-pink shaded mauve. ● \$1.25 each.

**MME. JULES BOUCHE.** White. The most vigorous-growing pearly white. \$1.25 each.

**MRS. ERSKINE PEMBROKE THOM.** Non-● fading pure, deep yellow. \$1.25 each.

**MRS. PIERRE S. DU PONT.** Yellow. Red-● dish gold buds opening to orange-yellow. \$1.25 each.

**PINK DAWN.** A handsome deep rose-pink. \$1.25 ● each.

**POINSETTIA.** Red. Bright rich scarlet. \$1.25 ● each.

**PRESIDENT HERBERT HOOVER.** Bicolor. Flaming scarlet and yellow in the bud, opening to soft creamy yellow. \$1.25 each.

**PRESIDENT MACIA.** The pink Rose par excellence. \$1.25 each.

**RADIANCE.** Silvery and rose-pink. \$1.25 each.

**RED RADIANCE.** Cerise-red. \$1.25 each.

**SCŒUR THERESE.** Buttercup-yellow marbled madder-carmine. \$1.25 each.

● **SOUTHPORT.** Scarlet-red. \$1.50 each.

**TALISMAN.** Bicolor. Rich scarlet-gold to deep rose and pale yellow. \$1.25 each.

**THE DOCTOR.** Pink. One of the largest and ● most exquisite satiny silvery pinks. Intense fragrance. \$1.50 each.

Deduct 10% quantity discount when ordering any 25 or more plants from this page.



# Novelties and More Recent Roses

Fuller descriptions and more varieties will be found on pages 6 and 7 in our 1947 Complete Catalogue, "Garden Gems."

Newer varieties should be considered the "spice" and "dessert" of Rose-growing. Standard kinds are the "entree," but when you know exactly what a Radiance or Etoile de Hollande or President Herbert Hoover will do in your garden, then there are greater thrills ahead when planting a new Rose.

**CALIFORNIA.** Pat. 449. Bicolor. Bronzy apricot with an iridescent sheen, reverse coppery pink. \$1.75 each.

**CRIMSON GLORY.** Pat. 105. Red. A beautiful crimson flower shaded deep red. \$1.50 each.

**DIAMOND JUBILEE.** P.R.R. Buff-orange. Flowers very large, double and high centered; color intensified in cool weather. All-America Rose Selection for 1948. \$2.00 each.

**MIRANDY.** Pat. 632. Maroon-red buds and blooms of good substance. Very fragrant. First winner in the 1945 All-America Rose Selections. \$2.00 each.

**PEACE.** Pat. 591. The only All-America Rose Selection for 1946. Every stage of flower development from bud to fully opened bloom shows harmonious colors from cream-yellow with watermelon-pink edging to alabaster-white. Plant extra strong grower. \$2.00 each.

**RUBAIYAT.** Pat. Pending. All-America Rose Selection for 1947. Long, brilliant red buds opening to large, perfect blooms showing unusual crimson-red Rose color. \$2.00 each.

**SHADES OF AUTUMN.** Pat. 542. Bicolor. Delightful color combination of orange-copper with carmine shadings. \$1.75 each.

**WILL ROGERS.** Pat. 256. Very dark velvety red opening to blackish crimson. Especially fine during cool autumn weather. \$1.50 each.



CRIMSON GLORY. \$1.50 each

## SPECIAL OFFER F-47-3

All 8 varieties on this page, 1 of each for \$12.50 Net (Regular Value \$14.50)

Deduct 10% quantity discount when ordering any 25 or more plants from this page.



CALIFORNIA. \$1.75 each



PEACE \$2.00 each

# FLORIBUNDA ROSES

The word "Floribunda" is used to refer to bush Roses producing clusters of blooms without interruption from early summer until late frosts.

This class includes new as well as old varieties of large-flowered or Hybrid Polyanthas. They are all very easy to grow and exceptionally hardy. Use them informally in Rose beds, in permanent groups for color in the foreground of hardy shrub borders, for straight-line border or hedge planting instead of the more common privet or barberry. They provide good foliage, utility—plus—constant color.

**DAGMAR SPATH (WHITE LAFAYETTE).**

Large, pure white trusses. \$1.25 each.

**ELSE POULSEN.** Bright rose-pink. \$1.25 each.

**LAFAYETTE.** Cherry-crimson. \$1.25 each.

**MRS. R. M. FINCH.** Clear pink, blush and white so that the cluster shows all colors. \$1.25 each.

**PINOCCHIO.** Pat. 484. Large clusters of lovely salmon-pink buds and blooms. \$1.25 each.

**SALMON SPRAY.** Rich salmon-pink, reverse of petals carmine. Grows 4 to 5 ft. \$1.25 each.

**PINK SATIN.** This fine new Floribunda has both the color and texture of a lovely pink satin dress. No sooner is the first crop of blooms produced than the buds for successive ones follow, even during hot summer weather. The plants are hardy, healthy and long-lived. You will like the fresh sparkling true pink in all stages of flower development. \$1.50 each.

Deduct 10% discount for any 25 or more plants on this page.



PINOCCHIO. \$1.25 each

*Special*  
**FLORIBUNDA OFFER**  
F-47-4

**2** each of the 7 sterling varieties on this page, 14 plants for **\$15.50** NET  
(Regular value \$18.00)

Fuller descriptions or illustrations will be found on page 8 in our 1947 General Catalogue of 56 pages.



PINK SATIN FLORIBUNDA. \$1.50 each

# HYBRID PERPETUAL ROSES

## The Old-Fashioned "June" Roses

"The Crowning Glory of the  
Rose Garden in June"

Perfection in size of flower, fragrance, disease-resistance and strength of growth predominate in this class. Occasional but lovely blooms again appear in early fall on all these six varieties.

**CAPTAIN HAYWARD.** Scarlet-crimson.  
\$1.25 each.

**FRAU KARL DRUSCHKI.** Snow-white.  
\$1.25 each.

**GEORG ARENDS.** Often called "Pink  
Druschki." \$1.25 each.

**HENRY NEVARD.** Crimson-scarlet. \$1.25 each.

**MRS. JOHN LAING.** Clear rose-pink. \$1.25 each.

**ULRICH BRUNNER.** Bright cherry-red.  
\$1.25 each.



**CAPTAIN HAYWARD.** \$1.25 each

### SHRUB ROSES, continued

**ORATAM.** A comparatively new shrub Rose. Orange-copper flower with delicious Damask fragrance. 4 to 5 ft. \$1.50 each.

**PINK GROOTENDORST.** Clusters of fringed, light pink blooms all season. 5 to 6 ft. \$1.50 each.

**RUGOSA ALBA PLENA.** The true double white Rugosa. 5 ft. \$1.50 each.

**SARAH VAN FLEET.** Vivid rose-pink blooms all summer and fall. 7 to 8 ft. Rugosa. \$1.50 each.

**STERN VON PRAG.** Double red, velvety flowers. 4 ft. Rugosa. \$1.50 each.

**VANGUARD.** Large, double, orange-salmon flowers on a lovely 6 to 7-foot Rugosa shrub whose foliage alone is most attractive. Worth waiting until established a few years, when dozens of its fine blooms are produced on long, strong stems. \$1.50 each.

*Fuller descriptions and many more varieties on page 15 in our 1947 Complete Catalogue, "Garden Gems."*

Deduct 10% quantity discount when ordering any 25 or more of these Hybrid Perpetual and Shrub Roses.

### SPECIAL OFFER B. & A. F-47-5

1 each of these 6 H.P. varieties for **\$6.50**  
Net

(Regular value \$7.50)

*Fuller descriptions and more varieties on page 11 in our 1947 Complete Catalogue, "Garden Gems."*

## SHRUB ROSES

### Including RUGOSAS and Their Hybrids

Use them like Spireas, Deutzias, Weigelas and other flowering Shrubs in Borders.

**DELICATA.** Large, double flower of an unusual mauve color shaded mallow-lavender. Remontant Rugosa. 5 to 6 ft. \$1.50 each.

**DR. ECKENER.** Coppery rose and golden yellow bicolor; semi-double flowers. Remontant. 5 to 6 ft. \$1.50 each.



**VANGUARD.** \$1.50 each



A HEDGE OF RUGOSA ROSES

# Large-Flowered Hardy Climbing Roses

The collection of Climbers grown by Bobbink & Atkins is the most extensive in this country, covering all types, colors and periods of bloom. The modern class of Climbers and Pillars is by far the most popular and useful today for arbors, trellises, fences, tree stumps, walls, etc. Practically all the varieties produce good flowers on long stems suitable for cutting for home decoration. We can hardly conceive of a greater return in all flowerdom than the scores of beautiful Roses produced on one climbing Rose

Most planters do not realize the wide spread of bloom periods in this class of Hardy Climbers. The letters after each variety indicate the approximate blooming time, latitude New York City, as follows: E (early) from about May 25 to June 3; MS (midseason) from June 4 to about June 15; L (late) from mid-June to early July. There are several "everblooming" varieties that extend the season into September and October.

**AMERICAN PILLAR.** Scarlet-rose with white centers. MS. \$1.25 each.

**BLAZE.** Pat. 10. Vivid scarlet blooms over a long period; occasionally repeats in early fall. \$1.50.

**DREAM GIRL.** Pat. 643. Bobbink & Atkins new everblooming, coral-pink, hardy climber. Give it an opportunity to get well established and you will be rewarded with the most fragrant and gorgeous blooms of all climbers or pillars. Beginning in June, it produces successive crops until late October. The pleasing spicy fragrance is considered one of its greatest attributes. \$2.00 each.

**DR. HUEY.** Large, ruffled, maroon-red flowers lasting for weeks. E and MS. \$1.25 each.

**DR. W. VAN FLEET.** Soft pale shades of flesh and apple-blossom-pink. MS. \$1.25 each.

**GOLDEN GLOW.** Pat. 263. Considered one of our best true yellow climbers. MS. \$1.50 each.

**INSPIRATION.** Another new Bobbink & Atkins climbing and pillar Rose and a fitting companion to Dream Girl. Some rosarians refer to it as an "everblooming Mary Wallace," although the sparkling true rose-pink tones gleaming with silvery pink are more intense; classed as "Everblooming." \$2.00 each.

**MARY LOVETT.** Pure waxy white; large, broad-petaled flower. MS. \$1.25 each.

**MARY WALLACE.** Bright pink with a luminous sheen. MS. \$1.25 each.

*Fuller descriptions and many other varieties are on pages 12 and 13 in our 1947 Complete Catalogue, "Garden Gems."*

**MERCEDES GALLART.** First crop in June is cerise-red but the autumn blooms are bright crimson. Very fragrant; everblooming. \$1.50 each.

**MRS. WHITMAN CROSS.** Unusual vivid orange color with an overlaid salmon-pink sheen. Some repeat blooms in late summer and fall. E and MS. \$1.50 each.

**ORANGE EVERGLOW.** Pat. 505. Copper-yellow. Foliage extra fine. MS and L. \$2.00 each.

**PAUL'S SCARLET CLIMBER.** Most popular red climber or pillar. MS. \$1.25 each.

**SILVER MOON.** White with showy golden stamens. MS. \$1.25 each.

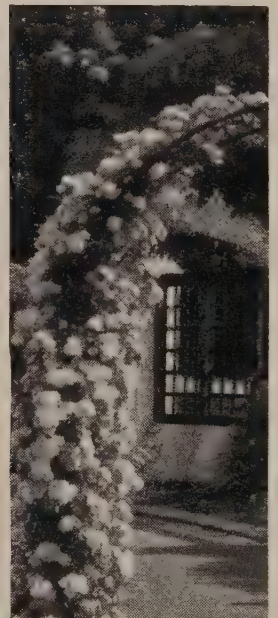
## TRAILERS

**MAX GRAF.** Handsome foliage and sprays of large, single, shining pink flowers. \$1.00 each; 10 for \$9.00; 25 for \$20.00.

**RUGOSA REPENS ALBA.** Fine trailer with glossy foliage and big, snowy flowers in clusters. \$1.00 each; 10 for \$9.00; 25 for \$20.00.

**WICHURAIANA.** White. A matted creeper with glossy, almost evergreen, small, shiny foliage. Sprays of small, white fragrant flowers. 75 cts. each; 10 for \$6.50; 25 for \$15.00.

Fine trailer with



A CLOSE-UP OF DREAM GIRL. Pat. 643. Climber and Pillar Rose. \$2.00 each

# Old-Fashioned Roses

The old Roses have an eloquence of their own which speaks to all who love the Rose, who know its history and appreciate what it means to humanity. Friends of this firm have known for a long time of our interest in Old-Fashioned Roses. We are more determined than ever to continue their production so that this interest will become stronger as the years go by. Every grown man and woman cherishes some memory of the fragrant, unsophisticated charm of the Roses of long ago. But regardless of their sentimental value they have many sterling qualities, not the least of which is their genuine old Rose perfume, oftentimes rare in modern Roses. The very condensed list we offer on this page represents but a few of the many varieties that are more fully described on pages 16, 17, 18 and 19 in our 1947 Complete Catalogue, "Garden Gems." In order to popularize these gems of the Rose world, we have chosen the most outstanding varieties in the four main classes and offer them to you who wish to try at least a few in your own garden.

## Moss Roses

These four "Moss" varieties show the typical dense mossiness of stem and bud in all stages of development.

**BLANCHE MOREAU.** Double white flowers, tinged pink in center. \$1.50 each.

**JEANNE DE MONTFORT.** Clear pink with silvery edges. \$2.00 each.

**MME. LOUIS LEVEQUE.** Brilliant salmon-pink. Fragrance extraordinary. \$2.00 each.

**MOUSSEUX ANCIEN.** Delicate pink shaded darker pink. \$2.00 each.

## Damask Roses

**ROSA DAMASCENA.** The true type. Double rose-pink blooms showing many golden stamens in the open stage. \$1.50 each.

**YORK AND LANCASTER.** Small, semi-double, pale pink flowers fading to white, with a few occasional reddish pink petals in the same flower. Not to be confused with *R. Mundi*, which is sometimes offered as York and Lancaster. \$2.00 each.

## Cabbage (Centifolia) Roses

The word "cabbage" does not refer to the size of bloom but to the incurved, globular form and the overlapping or imbricated petalage formation.

**ROSE DES PEINTRES.** Deep rose-pink. The Rose of the old Dutch painters of still life. \$2.00 each.

**VARIEGATA DI BOLOGNA.** Pure white background with purplish red veinings on each petal. \$2.00 each.

**VIERGE DE CLERY.** Considered the best white Centifolia. \$2.00 each.

## Gallica or French Roses

**CARDINAL DE RICHELIEU.** The famous "blue" French Rose. In some lights, the deeper violet tones are almost blue and again purple verging to velvety black. \$2.00 each.

**DUC DE GUICHE.** A most interesting lavender-orchid shade. \$2.00 each.

**MARIE TUDOR.** Salmon-pink overlaid with darker rose-pink sheen. \$2.00 each.

**ROSA MUNDI.** Broadly striped red and rose-pink on a white background. \$1.50 each.

East Rutherford, N. J.



### SPECIAL OFFER F-47-6

**13** plants, 1 each of every Old-fashioned variety on this page, (Regular value \$24.50) . . . for **\$22.00** Net



Showing the characteristics of the true old Moss Rose. Varieties in many colors are described on this page.

# Hybrid RHODODENDRONS

The Hybrid Rhododendron is undoubtedly the showiest of all broad-leaved flowering evergreens. Its dignified, lustrous rich green foliage, in symmetrical arrangement, backgrounds the magnificent flowers, ranking it as one of the most beautiful evergreen shrubs in the garden.

Rhododendrons prefer to grow together in clumps, thus protecting the soil from the scalding sun. When planted in groups they generally can be relied on to carry through extremes of heat and cold.

A mulch of leaf-mold from hardwood trees such as Oak, furnishes not only the acid conditions the plants need, but the loose fibrous material retains moisture and keeps the plant roots cool.

*Cultural directions are sent with each order.*



The effect of group planting

AVAILABLE SEPTEMBER, OCTOBER, AND NOVEMBER

## RHODODENDRON OFFER No. 1

**3** varieties, our selection,  
1 pink, 1 white, 1 red, averaging 12 to 15 inches for . . . . . **\$9.75**  
(regular value \$10.50)

## RHODODENDRON OFFER No. 2

**5** varieties, our selection,  
in a complete color-range as illustrated, size to average 12 to 15 inches for . . . . . **\$15.75**  
(regular value \$17.50)

## RHODODENDRON OFFER No. 3

**3** varieties, our selection,  
1 pink, 1 white, 1 red, averaging 15 to 18 inches for . . . . . **\$14.50**  
(regular value \$15.00)

EACH PLANT CORRECTLY LABELED

## The Varieties We Offer:

- ALBUM ELEGANS.** White, faintly shaded violet and mauve.
- CARACTACUS.** Crimson-carmine.
- DR. C. H. DRESSELHUYTS.** One of the very best pure reds.
- MRS. C. S. SARGENT.** Very deep, rich shade of pink.
- PURPUREUM ELEGANS.** Purple.
- ROSEUM ELEGANS.** Rose-pink, shading to lilac.
- ROSEUM SUPERBUM.** Brilliant pink.

Prices of above:

**12 to 15 in., \$3.50 each**  
**15 to 18 in., \$5.00 each**

No quantity discount

Inasmuch as shortly after this Catalogue is issued certain sizes of some varieties become sold out, we keep an up-to-date list showing quantities, varieties, and sizes available. We shall be pleased to mail this list upon request.

**NOTE:** Rhododendrons cannot tolerate lime in any form; therefore, for sections of the country where limestone is present or which border on a limestone belt, we suggest that you contact your State Experiment Station for information regarding the proper procedure in preparing your soil for success with these acid-loving plants.

*All Hybrid Rhododendrons are shipped balled and burlapped*

# HARDY EVERGREEN SHRUBS

These acid-loving plants are, in most instances, of low compact growth, each carrying its own individuality. If slightly trimmed annually, they may remain in the same location for many years. Their foliage is dark and glossy, remaining a rich color throughout the winter.

Thriving in sun or partial shade, they become the most suitable plant material for city gardens, foundation plantings, roof gardens, etc.



## PIERIS (Andromeda) Japonica Lily-of-the-Valley Shrub

A lovely, all-year shrub with pendulous waxy white flowers in early spring, resembling lily-of-the-valley. The varied beautiful colors of the new foliage rival the flowers of many plants and make it a valuable addition to any landscape planting. Grows to about 5 feet. 12 to 15 in., \$3.75 each.



PIERIS japonica. \$3.75 each

## BERBERIS · Barberry

**Julianæ. Wintergreen Barberry.** Beautiful evergreen Barberry that blends well with rhododendrons, laurel, etc. 12 to 18 in., \$2.00 each.

## ILEX · Holly

**Crenata convexa (bullata). Boxleaf Holly.** Shiny, curved, box-like leaves make this dense, dwarf shrub an ideal substitute for boxwood. Grows to 2 feet. Can be sheared to dwarf proportions. 12 to 15 in., \$2.00 each.

**Crenata latifolia. Broadleaf Holly.** Leaves round, shiny dark green, retaining a good color all year; black berries. In foundation plantings, hedges or as specimens it makes a fine showing. 12 to 18 in., \$2.25 each.

**Crenata microphylla. Littleleaf Holly.** A dense, compact bush with dark green, glossy leaves; produces many shiny black berries. 12 to 15 in., \$2.00 each.

**Glabra. Inkberry.** Its rich black-green foliage and plentiful shining black berries blend with rhododendrons, laurel, etc. 15 to 18 in., \$2.00 each.

## KALMIA

**Latifolia. Mountain Laurel.** One of the most popular broad-leaved evergreens doing well in partial shade. 12 to 15 in., \$2.00 each; 1½ ft., \$2.75.

## LEUCOTHOE

**Catesbæi. Drooping Leucothoe.** An arching plant whose purplish bronze fall foliage is outstanding. 1 to 1½ ft., \$1.75 each.

# HARDY AZALEAS

FOR SHIPPING AND PLANTING IN THE FALL



A planting of May-flowering Azalea Mollis

**Altaclarensis.** This is considered the finest orange-yellow Azalea in existence. The handsome trusses of molten gold open to a final glorious pure yellow. 1 to 1½ ft., \$3.50 each; 3 for \$9.50.

**Mollis. Chinese Azalea.** In shades of yellow, salmon, and orange. Thrives under ordinary garden treatment. Useful as undergrowth among tall trees or as a border for large shrubberies. 1 to 1½ ft., \$3.00 each.

**Mucronulatum. Dahurian Azalea.** The earliest Azalea to flower, usually in April. Single flowers of frilled violet-rose. Very effective with Forsythia. 1 to 1½ ft., \$3.00 each.

**Ponticum. Yellow Azalea.** A matchless yellow of aristocratic brilliance, which flowers in late May. Its thrilling, exciting sweet honeysuckle fragrance will never be forgotten. Blooms freely and will enliven all companion plants. 1 to 1½ ft., \$3.50 each; 1½ to 2 ft., \$4.50 each.

## PONTICA AND RUSTICA HYBRIDS

Their bloom period follows Azalea Mollis

**Coccinea speciosa.** Single flowers of vivid reddish orange.

**Narcissiflora.** A beautiful double, clear sulphur-yellow.

**William III.** Single, clear bright orange.

Any of above, 12 to 15 in., \$4.50 each

We have a large number of specimen plants. Ask for our special list.

## Special Offer No. 1

For Fall Planting

B. & A. Hybrid Mollis Azaleas

6 Azaleas as pictured Assorted colors . . . . . \$16.25

(Regular value \$18.00)

## Special Offer No. 2

One each of the following:

**Altaclarensis.** Molten gold.

**Mucronulatum.** Rose-violet.

**Ponticum.** Yellow.

All plants 1 to 1½ ft. high and each plant labeled

for \$8.75

(Regular value \$10.00)

## MOLLIS HYBRIDS

**Hortulanus Witte.** Orange-yellow.

**Hugo Koster.** Salmon-red.

**Koster's Brilliant Red.** Glowing orange-red.

Price of above: 15 x 18 in., \$12.50 each

Bobbink & Atkins



AUTUMN  
1947

**Bobbink & Atkins**  
Nurserymen

ROSES, PERENNIALS, TREES,  
FLOWERING SHRUBS, FRUITS  
East Rutherford, N. J.

*Do not write in this space*



Date \_\_\_\_\_

Name \_\_\_\_\_  
(Print Name and Address)

Street \_\_\_\_\_

City \_\_\_\_\_

Amount Enclosed

\$ \_\_\_\_\_

Zone No. \_\_\_\_\_ State \_\_\_\_\_ Check  Money Order  Express Office \_\_\_\_\_  
(If different from P. O.)

See Terms, page 22

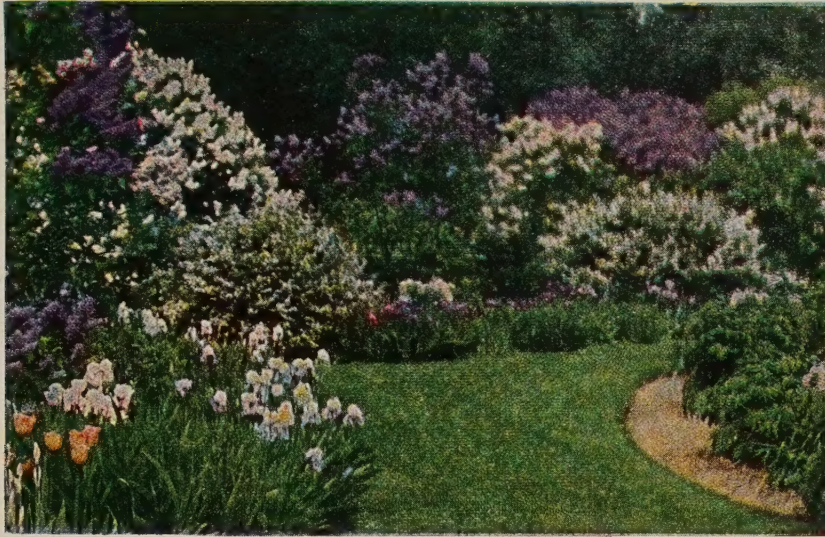
Ship To \_\_\_\_\_

Quantity	EACH PRICE		TOTAL	
(OVER)		Sub-Total		

**ITEMS NOT AVAILABLE**  
Should any of the varieties you order be sold out, we will substitute similar types of equal or greater values unless instructed to the contrary.



# Deciduous • Ornamental Flowering Shrubs



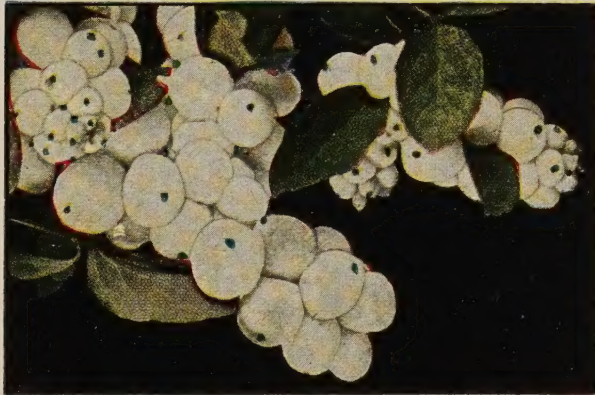
LILAC TIME

We have combed the list of varieties to be sure of offering you the best.

## Lilacs By Color Only

**WHITE**                      **SATINY PINK**  
**ROSY PURPLE**           **VIOLET-RED**  
**BLUE**                        **PURPLE**  
**MAUVE-PINK**            **LAVENDER**

2 to 3 ft., \$2.50 each; 3 to 4 ft., \$3.75 each



SNOWBERRY. \$1.50 each

## Flowering Crab Apple Trees

- MALUS atrosanguinea. Carmine Crab.** A small tree, well formed, and covered with clusters of dark pink and carmine flowers. \$2.50 each.
- M. ioensis Bechteli. Bechtel's Crab.** One of the most picturesque of the double pink-flowering Crabs. \$2.75 each.
- M. Scheideckeri. Scheidecker Crab.** Large, double, bright pink flowers followed by a profusion of waxy yellow fruits. \$2.50 each.

## Deciduous Flowering Shrubs

A list of the most desirable kinds will be found on page 52 of our General Catalogue. All of them are for fall planting.

East Rutherford, N. J.

PLANT THIS FALL  
**French Hybrid Lilacs**

## Special Offer 1

**6** 2 to 3 ft. plants, \$ **14.00**  
 varieties for . .

(Regular value \$15.00)

EACH VARIETY LABELED

## Lilac Special Offer 2

**6** 3 to 4 ft. plants, \$ **21.00**  
 varieties for . .

(Regular value \$22.50)

EACH VARIETY LABELED

## Flowering Shrubs

**CALYCANTHUS floridus. Strawberry Shrub.** Also known as Carolina Allspice and Sweet-shrub. Illustrated. \$1.50 each.

**DEUTZIA gracilis. Slender Deutzia.** White flowers in May. 2½ ft. \$1.50 each.

**ENKIANTHUS campanulatus.** We highly recommend this shrub for any location. 1½ to 2 ft., \$2.75 each.

**EUONYMUS alatus. Winged Euonymus.** Grows into a heavy, thick shrub to 5 feet. Indifferent to soil situations. \$1.50 each.

**FORSYTHIA intermedia spectabilis.** Surpasses all others in profusion of bloom and growth. \$1.50 each.

**LONICERA fragrantissima.** A beautiful, quick-growing shrub with fragrant flowers followed by glittering red berries. \$1.50 each.

**SYMPHORICARPOS racemosus. Snowberry.** Pink flowers followed by white fruits. Grows 4 to 5 feet. Illustrated. \$1.50 each.

**WEIGELA, Eva Rathke.** A shrub with dark crimson flowers. \$1.50 each.



STRAWBERRY SHRUB. \$1.50 each



## CHRYSANTHEMUMS

### For Local Sales and Display in Autumn

Large, field-grown clumps, balled and burlapped, are available at the Nursery, cash and carry, at the flat rate of 75 cts. each.

Visitors are always welcome to see and enjoy the gorgeous spectacle of acres of Mums blooming in our fields during late September and October.

## VINCA MINOR · Periwinkle or Myrtle

These low, evergreen, trailing plants with blue flowers are ideal for ground-covers on banks, terraces, graves and especially in bare, shady locations where grass will not grow. Maybe you have one of those unsightly spots under Norway maples, for instance, where a hundred or two Vincas will provide the permanent, rich green effect desired. Space our well-established potted plants about a foot apart each way or closer if you wish. The first cost is the last and far cheaper in the end than expensive annual top-soiling and reseeded. 10 for \$2.00; 25 for \$4.50; 100 for \$15.00.

## Our Terms of Shipping and Payment

### HOW TO ORDER

On order sheet provided, print name, address, county and state. Give your shipping preference. Plainly indicate sizes and prices where shown.

### CASH WITH ORDER

#### ROSES AND PERENNIALS.

We prepay postage east of the Mississippi on mail orders of dormant Roses (except Tree Roses) and perennials which can be packaged within parcel-post requirements. For customers west of the Mississippi, please add 10% to total of order. *On all orders under \$3.00, please add 35 cts. to help defray the cost of handling and packing, as it is impossible for us to totally absorb this expense on smaller orders.* Tree Roses and Perennials which are too bulky for mailing require shipment by Express; on such orders when cash is sent in advance, we furnish packing material and cases at no extra cost, but shipping charges are payable by you. It is to your advantage to send cash with order.

#### EVERGREENS, SHRUBS, AND VINES.

All prices are net F.O.B. Rutherford, N. J., to which add 10% of total order to help defray the cost of packing.

### CHARGE ACCOUNTS

**NEW CUSTOMERS** wishing to open a charge account will oblige us by sending with their order the names of three business houses which extend them credit. For the convenience of responsible parties, we are pleased to send goods on open account of \$10.00 or more, *but we do not prepay delivery charges in this event.* If you desire Express or Parcel Post charges to be prepaid, they will be added to your invoice. Our terms are Net Cash 30 days.

### ITEMS NOT AVAILABLE:

Should any of the varieties you order be sold out, we will substitute similar types of equal or greater values unless you instruct us to the contrary when ordering.

### RESPONSIBILITY:

Our responsibility ends with delivery to the carrier. Shipments travel at the risk and cost of purchaser, unless otherwise provided. We give no warranty, expressed or implied, as to the productiveness or life of the stock. Our liability for varieties which prove untrue to name shall be limited to free replacement or refund of purchase price.

### TRUCK DELIVERIES:

Where customers are resident within 25 miles of our nursery, we will deliver without charge on such days as we have deliveries in that particular section. We cannot deliver on specific days or at certain hours.

**INVITATION TO LOCAL PATRONS WITHIN MOTORING DISTANCE:** We invite your inspection of the many fine varieties of shade trees, fruit trees and other plants in larger sizes available for Fall 1947 planting. These you may select from our salesground in East Rutherford.

# Hardy Vines...

All Our Vines Are Well-Established Plants in Pots for Easy Transplanting

**AKEBIA quinata. Fiveleaf Akebia.** Violet-brown flowers which have a pleasant odor. Strong plants, \$1.00 each.

**AMPELOPSIS quinquefolia. Virginia Creeper.** Foliage changing to scarlet in fall. Grows quickly. \$1.00 each.

**A. tricuspidata Lowi. Miniature Boston Ivy.** A miniature Boston Ivy whose delicate soft covering habit is much desired. 90 cts. each; 10 for \$8.00. A self-clinging vine.

**A. tricuspidata (Veitchi). Boston Ivy.** The perfect vine for quick coverage. 85 cts. each; 10 for \$7.50. A self-clinging vine.

**EUONYMUS radicans coloratus. Purple-leaf Winter-creeper.** Evergreen. A strong-growing variety with long, narrow foliage, tinted purplish red. An excellent ground-cover. 10 for \$6.00; 25 for \$12.50; 50 for \$20.00.

**LONICERA japonica Halliana. Hall's Honeysuckle.** A strong grower and constant bloomer. Excellent for covering banks. Plant 15 inches apart. 10 for \$3.00; 100 for \$25.00.

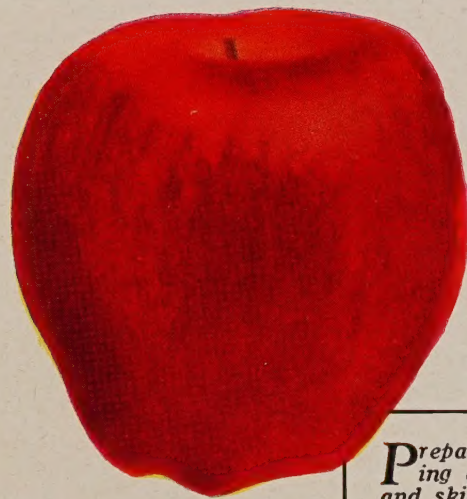
**POLYGONUM Auberti. Chinese Fleece-Vine.** A vine of great merit. 85 cts. each; 10 for \$7.50. Illustrated.



POLYGONUM Auberti. 85 cts. each

## FRUITS

# for Food and Shade



APPLE, Red Delicious

All fruit tree shipments  
F.O.B. Rutherford,  
New Jersey

## APPLE TREES • \$3.00 each

**Red Astrachan.** Summer. Fine-grained, crisp; red. Good grower and producer.

**Red Delicious.** Winter. A very rich red color, more pronounced than the regular Delicious.

**Stayman's Winesap.** Winter. Yellow with dark red markings.

**Wealthy.** Autumn. Brilliant red striped; wonderful wine-like flavor.

We have an excellent limited supply of Apple Trees in larger sizes. They range from \$5.00 to \$10.00 each. These trees are for local sales and deliveries only.

*Preparing orders of living plants for packing and shipment requires special care and skill. Our plants are freshly dug and packed for successful transplanting; none are kept on shelves or counters as manufactured articles. During the busy shipping season of comparatively few weeks, occasional mistakes may occur. To err is human and so we welcome honest criticisms as much as complimentary congratulations.*



PEAR, Bartlett

## PEAR TREES • \$3.00 each

**Bartlett.** Summer. Yellow with red blush.

**Beurre Bosc.** Autumn. Large, long-shaped, deep yellow fruit.

**Clapp's Favorite.** Summer. Large; yellow with crimson and russet.

East Rutherford, N. J.



Our enlarged Sales Grounds and New Field Office to better serve the many patrons in this great metropolitan area who make it a habit to motor to the Nursery for Quality Plants for Permanent Landscape Beauty.

**A Visit to our Nursery Sales and Display Grounds and Greenhouses on Paterson Avenue in East Rutherford will prove to be a pleasant, profitable, and informative one**

It is barely possible to list all the trees and plants we grow in any one catalogue presentation. The larger trees and evergreens that require transplanting with a large ball of soil, wrapped in burlap, are for local sales and deliveries; it is obvious why it is not practical or economical to transport them any distance by rail or parcel post.

All our "Balled & Burlapped" Evergreens such as Taxus (Yews), Junipers, Hemlocks, and Retinosporas . . . Evergreen and Deciduous Shrubs . . . Rhododendrons and Azaleas . . . Large Fruit Trees . . .

Vines . . . Perennials . . . are usually ready for local "CASH and CARRY" sales at proper planting seasons. Well-informed attendants are ready to assist you with the selection of appropriate plants that will make your garden a part of your home life. For the benefit of those who cannot come weekdays, 7.00 to 5.30, we are open Sundays, 9.00 to 4.30. There are always plants and flowers of unusual interest to see and buy every month in the year when visiting this great horticultural establishment.

**● OUR LOCATION AND HOW TO REACH US ●**

When motoring from the Oranges, Montclair, Nutley, Glen Ridge, Bloomfield, etc., take Van Houten Avenue after turning right off Valley Road, Grove Street, or Broad Street and cross the Passaic River to reach our Home Office and Nursery.

Motoring from Englewood, Teaneck, Tenafly, Hackensack, Ridgewood, Saddle River, Westwood, Oradell, Paterson, etc., is very easy via main mapped highways. From Westchester County, Connecticut, New York City and Long Island, use the George Washington Bridge or Holland Tunnel via mapped Routes 3, 6, or 17. We are about 8 miles from the Bridge or Tunnel.

**Bobbink & Atkins**

*Nurserymen and Plantsmen*

**ROSES, PERENNIALS, TREES, FLOWERING SHRUBS AND FRUITS**

**588 Paterson Ave., East Rutherford, N. J.**

**Phone: Rutherford 2-0700**

*Return Postage Guaranteed*

Sec. 562, P. L. & R.  
**U. S. POSTAGE  
 PAID**  
 E. Rutherford, N. J.  
**Permit No. 72**